

Plastic Anti-corrosion Ball Valve



Product Introduction:

Made of premium UPVC, PP and PVDF plastics, plastic anti-corrosion ball valves are lightweight valves for corrosive medium delivery. They feature superb corrosion resistance against acids, alkalis and salts without rust and scaling, suitable for medium and low pressure conditions. Compact, lightweight and easy to maintain, they have low flow resistance and high flow capacity with stable sealing. Widely used in chemical, water treatment, environmental protection and water supply fields, they deliver high cost performance.

Product Features:

- Full-range anti-corrosion: Made of UPVC/CPVC, resistant to various corrosive media, free from rust and scaling.
- Easy & fast installation: Lightweight and compact, greatly reducing transportation and labor costs.
- Superior sealing & flow performance: Precise sealing ensures zero leakage; low resistance design enables efficient medium delivery.
- Cost-effective long-term use: Wear-resistant and easy to maintain, featuring low operating cost for corrosive medium pipelines.

Flanged Electric Plastic Anti-Corrosion Ball Valve

Product Description

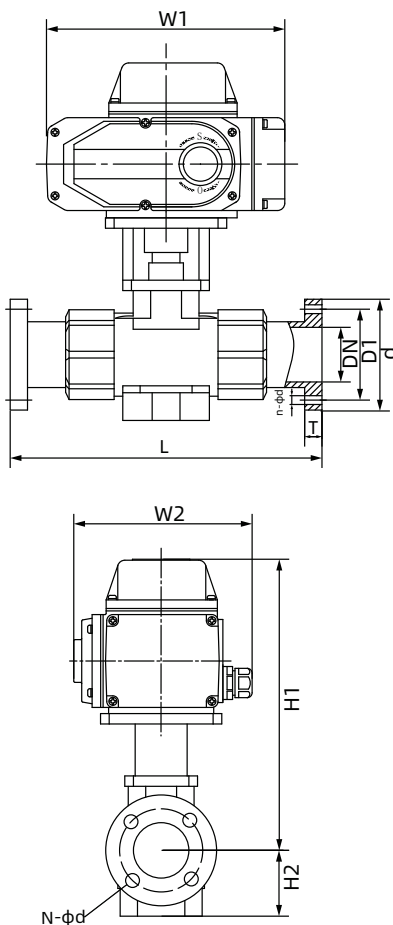
Flanged electric plastic anti-corrosion ball valve is firm and pressure-resistant for various pipelines. It achieves precise electric control. Plastic body resists strong acid and alkali with leakproof sealing, ideal for chemical waste liquid delivery in environmental protection and electroplating industries.

Main Performance Specifications

- Nominal Diameter: DN15~DN100
- Nominal Pressure: 0.1MPa~1.6MPa
- Medium Temperature: -15°C~60°C
- Protection Class: Ip67
- Applicable Media: Water, air, oil, corrosive chemical liquids
- Manufacturing Standard: GB12237-2021, API 6D
- Face-to-Face Standard: GB/T 12221-2005
- Inspection Standard: API 598
- Flange Standard: ANSI B16.5, JIS B2239



Installation Dimension Drawing



| Size | DN15 | DN20 | DN25 | DN32 | DN40 | DN50 | DN65 | DN80 | DN100 | |
|------|-------|-------|-------|--------|--------|-------|--------|-------|-------|-------|
| | 1/2" | 3/4" | 1" | 1-1/4" | 1-1/2" | 2" | 2-1/2" | 3" | 4" | |
| JIS | D | 95 | 100 | 125 | 135 | 140 | 155 | 175 | 185 | 210 |
| | D1 | 70 | 75 | 90 | 100 | 105 | 120 | 140 | 150 | 175 |
| | L | 143 | 172 | 187 | 190 | 212 | 234 | 259 | 304 | 372 |
| | N-φd | 4-φ15 | 4-φ15 | 4-φ19 | 4-φ19 | 4-φ19 | 4-φ19 | 4-φ19 | 8-φ19 | 4-φ19 |
| ANSI | D | 89 | 98 | 108 | 117 | 127 | 152 | 178 | 191 | 229 |
| | D1 | 61 | 70 | 79 | 89 | 99 | 121 | 140 | 152 | 191 |
| | L | 143 | 172 | 187 | 190 | 212 | 234 | 259 | 304 | 372 |
| | N-φd | 4-φ16 | 4-φ16 | 4-φ16 | 4-φ16 | 4-φ16 | 4-φ19 | 4-φ19 | 4-φ19 | 8-φ19 |
| DIN | D | 95 | 105 | 115 | 140 | 150 | 165 | 185 | 200 | 220 |
| | D1 | 65 | 75 | 85 | 100 | 110 | 125 | 145 | 163 | 180 |
| | L | 130 | 150 | 160 | 180 | 200 | 230 | 290 | 310 | 350 |
| | N-φd | 4-φ14 | 4-φ14 | 4-φ14 | 4-φ18 | 4-φ18 | 4-φ18 | 4-φ18 | 8-φ18 | 8-φ18 |
| T | 13 | 14 | 14 | 16 | 16 | 16 | 18 | 18 | 18 | |
| W1 | 166.5 | 166.5 | 166.5 | 166.5 | 166.5 | 196 | 255 | 255 | 255 | |
| W2 | 138 | 138 | 138 | 138 | 138 | 145 | 182 | 182 | 182 | |
| H1 | 153 | 164 | 173 | 183 | 195 | 234 | 242 | 278 | 326 | |
| H2 | 20.5 | 26 | 33 | 38 | 42 | 53 | | | | |

Double Union Plastic Anti-Corrosion Electric Ball Valve

Product Description

Union end electric plastic anti-corrosion ball valve is easy to install without hot work, fitting complex pipelines. Featuring precise electric control and acid-alkali resistant plastic body with stable sealing, it suits chemical waste liquid delivery, lightweight flow control gear for environmental protection and electroplating.

Main Performance Specifications

Nominal Diameter: DN15~DN100

Nominal Pressure: 0.1MPa~1.6MPa

Medium Temperature: -15°C~60°C

Protection Class: Ip67

Applicable Media: Water, air, oil, corrosive chemical liquids

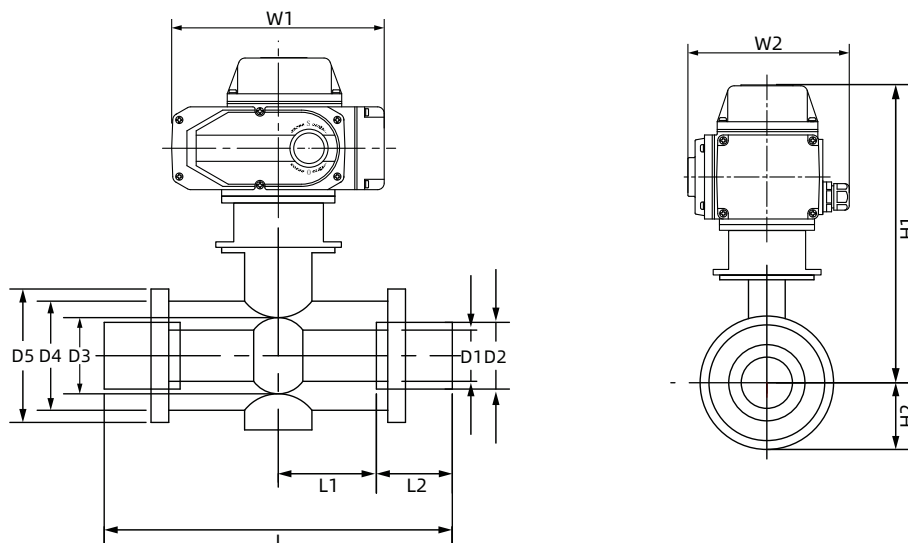
Manufacturing Standard: GB12237-2021, API 6D

Face-to-Face Standard: GB/T 12221-2005

Inspection Standard: API 598



Installation Dimension Drawing



| Size (mm) | L1 | L2 | L | D1 | D2 | D3 | D4 | D5 | H1 | H2 | W1 | W2 |
|-----------|-----|----|-----|----|-----|-----|-----|-----|-------|------|-----|-----|
| 15 | 37 | 23 | 120 | 13 | 20 | 22 | 31 | 45 | 223.5 | 29.5 | 196 | 145 |
| 20 | 39 | 25 | 128 | 18 | 25 | 26 | 36 | 55 | 225.5 | 33.5 | 196 | 145 |
| 25 | 44 | 28 | 144 | 23 | 32 | 32 | 47 | 66 | 232 | 39 | 196 | 145 |
| 32 | 47 | 32 | 158 | 30 | 40 | 38 | 56 | 82 | 239 | 47 | 196 | 145 |
| 40 | 54 | 37 | 182 | 38 | 50 | 48 | 65 | 98 | 255 | 54 | 196 | 145 |
| 50 | 63 | 42 | 210 | 49 | 63 | 60 | 80 | 120 | 264 | 65 | 196 | 145 |
| 65 | 78 | 45 | 246 | 64 | 75 | 76 | 94 | 140 | 334 | 82 | 255 | 182 |
| 80 | 90 | 55 | 290 | 77 | 90 | 89 | 110 | 160 | 347 | 96 | 255 | 182 |
| 100 | 106 | 65 | 342 | 98 | 110 | 114 | 134 | 225 | 374 | 114 | 255 | 182 |

Flanged Plastic Anti-Corrosion Pneumatic Ball Valve

Product Description

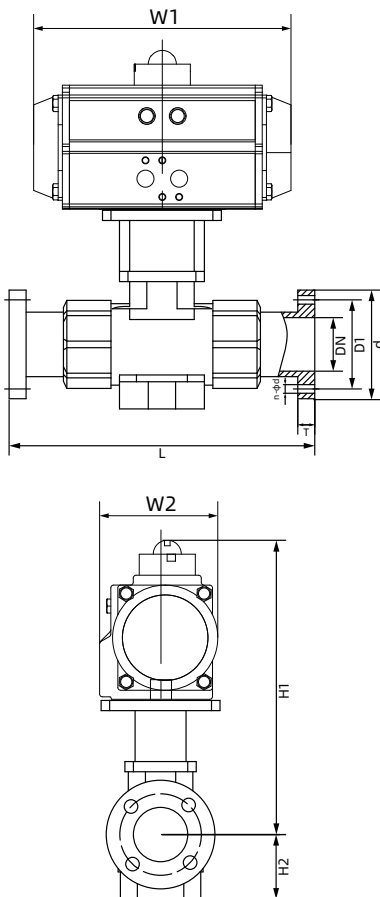
Flanged pneumatic plastic anti-corrosion ball valve is stably connected for various industrial pipelines. It opens and closes quickly with sensitive response. Acid and alkali resistant plastic body ensures tight sealing, ideal for chemical liquid and waste water treatment.

Main Performance Specifications

Nominal Diameter: DN15~DN100
 Nominal Pressure: 0.1MPa~1.6MPa
 Medium Temperature: -15°C~60°C
 Protection Class: Ip66
 Applicable Media: Water, air, oil, corrosive chemical liquids
 Manufacturing Standard: GB12237-2021, API 6D
 Face-to-Face Standard: GB/T 12221-2005
 Inspection Standard: API 598
 Flange Standard: ANSI B16.5, JIS B2239



Installation Dimension Drawing



| Size | DN15 | DN20 | DN25 | DN32 | DN40 | DN50 | DN65 | DN80 | DN100 | |
|------|------|-------|-------|--------|--------|-------|--------|-------|-------|-------|
| | 1/2" | 3/4" | 1" | 1-1/4" | 1-1/2" | 2" | 2-1/2" | 3" | 4" | |
| JIS | D | 95 | 100 | 125 | 135 | 140 | 155 | 175 | 185 | 210 |
| | D1 | 70 | 75 | 90 | 100 | 105 | 120 | 140 | 150 | 175 |
| | L | 143 | 172 | 187 | 190 | 212 | 234 | 259 | 304 | 372 |
| | n-φd | 4-φ15 | 4-φ15 | 4-φ19 | 4-φ19 | 4-φ19 | 4-φ19 | 4-φ19 | 8-φ19 | 4-φ19 |
| ANSI | D | 89 | 98 | 108 | 117 | 127 | 152 | 178 | 191 | 229 |
| | D1 | 61 | 70 | 79 | 89 | 99 | 121 | 140 | 152 | 191 |
| | L | 143 | 172 | 187 | 190 | 212 | 234 | 259 | 304 | 372 |
| | n-φd | 4-φ16 | 4-φ16 | 4-φ16 | 4-φ16 | 4-φ16 | 4-φ19 | 4-φ19 | 4-φ19 | 8-φ19 |
| DIN | D | 95 | 105 | 115 | 140 | 150 | 165 | 185 | 200 | 220 |
| | D1 | 65 | 75 | 85 | 100 | 110 | 125 | 145 | 163 | 180 |
| | L | 130 | 150 | 160 | 180 | 200 | 230 | 290 | 310 | 350 |
| | n-φd | 4-φ14 | 4-φ14 | 4-φ14 | 4-φ18 | 4-φ18 | 4-φ18 | 4-φ18 | 8-φ18 | 8-φ18 |
| T | 13 | 14 | 14 | 16 | 16 | 16 | 18 | 18 | 18 | |
| 双作用 | W1 | 147 | 147 | 168 | 168 | 184 | 204 | 262 | 268 | 301 |
| | W2 | 72 | 72 | 83 | 83 | 95 | 103 | 109 | 122 | 142 |
| | H1 | 160 | 169 | 194 | 204 | 228 | 257 | 273 | 303 | 393 |
| 单作用 | W1 | 147 | 168 | 184 | 204 | 262 | 268 | 301 | 390 | 458 |
| | W2 | 72 | 83 | 95 | 103 | 109 | 122 | 142 | 152 | 174 |
| | H1 | 160 | 185 | 225 | 225 | 245 | 281 | 331 | 362 | 435 |
| H2 | 20.5 | 26 | 33 | 38 | 42 | 53 | | | | |

Note: For pneumatic valves, the matching actuator model and relevant dimensions may vary depending on service medium, valve torque and control method.

Double Union Plastic Anti-Corrosion Pneumatic Ball Valve

Product Description

Union end pneumatic plastic anti-corrosion ball valve: weld-free union connection for easy assembly, disassembly and maintenance, suitable for complex pipelines. Fast and sensitive pneumatic operation, acid-alkali resistant plastic body and tight sealing, ideal for electroplating and fine chemical anti-corrosion flow control.

Main Performance Specifications

Nominal Diameter: DN15~DN100

Nominal Pressure: 0.1MPa~1.6MPa

Medium Temperature: -15°C~60°C

Protection Class: Ip66

Applicable Media: Water, air, oil, corrosive chemical liquids

Manufacturing Standard: GB12237-2021, API 6D

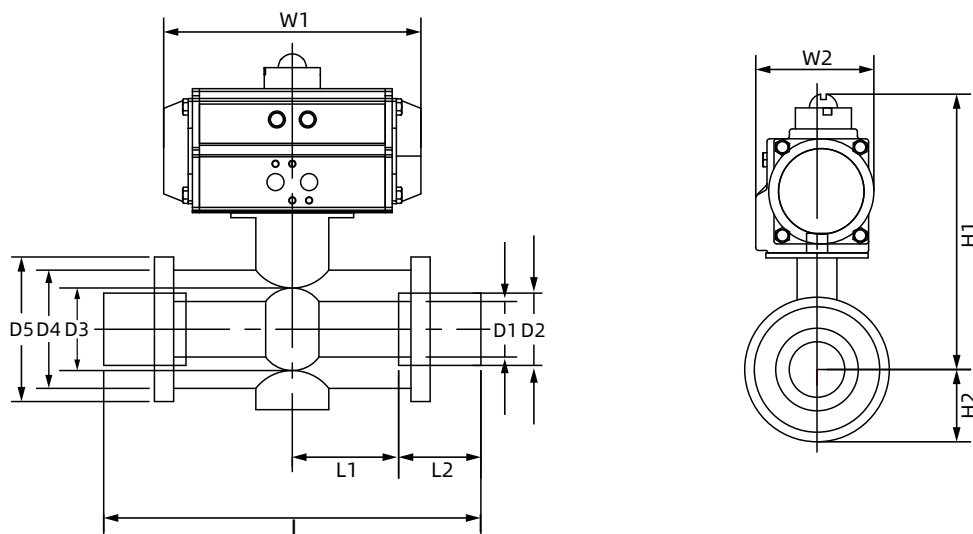
Face-to-Face Standard: GB/T 12221-2005

Inspection Standard: API 598

Flange Standard: ANSI B16.5, JIS B2239



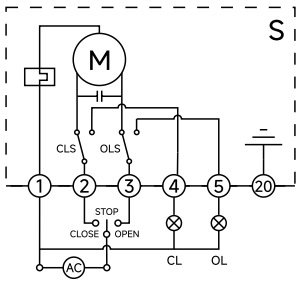
Installation Dimension Drawing



| Size (mm) | L1 | L2 | L | D1 | D2 | D3 | D4 | D5 | H2 | 双作用 | | | 单作用 | | |
|-----------|-----|----|-----|----|-----|-----|-----|-----|------|-------|-----|-----|-------|-----|-----|
| | | | | | | | | | | H1 | W1 | W2 | H1 | W1 | W2 |
| 15 | 37 | 23 | 120 | 13 | 20 | 22 | 31 | 45 | 29.5 | 209.5 | 147 | 72 | 209.5 | 147 | 72 |
| 20 | 39 | 25 | 128 | 18 | 25 | 26 | 36 | 55 | 33.5 | 211.5 | 147 | 72 | 227.5 | 168 | 83 |
| 25 | 44 | 28 | 144 | 23 | 32 | 32 | 47 | 66 | 39 | 234 | 168 | 83 | 246 | 184 | 95 |
| 32 | 47 | 32 | 158 | 30 | 40 | 38 | 56 | 82 | 47 | 241 | 168 | 83 | 262 | 204 | 103 |
| 40 | 54 | 37 | 182 | 38 | 50 | 48 | 65 | 98 | 54 | 269 | 184 | 95 | 286 | 262 | 109 |
| 50 | 63 | 42 | 210 | 49 | 63 | 60 | 80 | 120 | 65 | 287 | 204 | 103 | 311 | 268 | 122 |
| 65 | 78 | 45 | 246 | 64 | 75 | 76 | 94 | 140 | 82 | 327 | 262 | 109 | 385 | 301 | 142 |
| 80 | 90 | 55 | 290 | 77 | 90 | 89 | 110 | 160 | 96 | 372 | 268 | 122 | 431 | 390 | 152 |
| 100 | 106 | 65 | 342 | 98 | 110 | 114 | 134 | 225 | 114 | 441 | 301 | 142 | 483 | 458 | 174 |

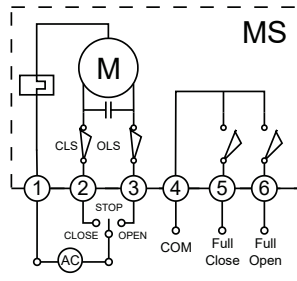
Note: For pneumatic valves, the matching actuator model and relevant dimensions may vary depending on service medium, valve torque and control method.

Circuit Diagram



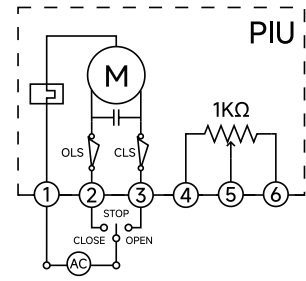
S

Switching Action Mode:
Switching operations (open/close) are achieved via AC switching signals, and a set of active position signals indicating fully open/fully closed status are output.



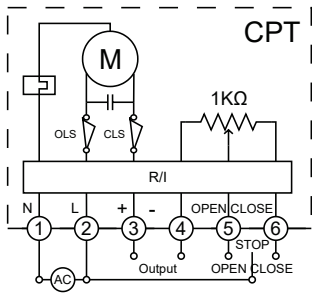
MS

Switching Action Mode: Outputs passive contact signals.
Structure: Equipped with two intermediate position switches.



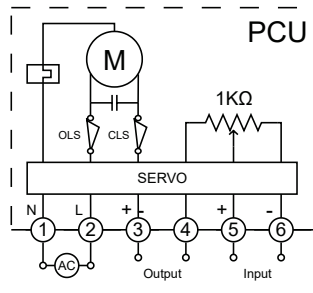
PIU

Switching Action Mode: Outputs 0~1000Ω feedback signal.
Structure: Equipped with 500Ω or 1kΩ potentiometer.



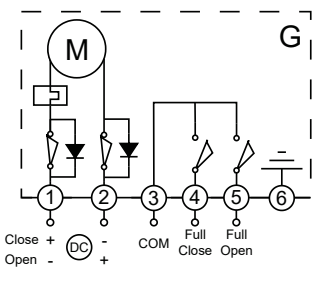
PCU

Regulating Action Mode: Accepts 4~20mA control signal input and outputs 4~20mA valve position feedback signal.
Structure: Integrated with 1kΩ potentiometer and control module (servo amplifier).



CPT

Switching Action Mode: Outputs 4~20mA valve position feedback signal.
Structure: Equipped with 1kΩ potentiometer and R/I converter.

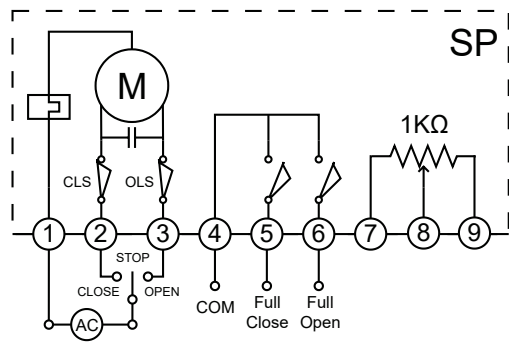


G

DC switching signals are output from the circuit via an external DC power supply to control the opening/closing program, and a set of passive contact signals corresponding to fully open/fully closed positions are provided.

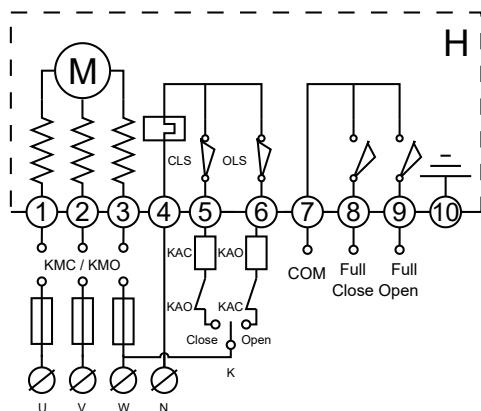
SP

Switching Action Mode: Controls valve opening angle via switching circuit, corresponding to potentiometer resistance value, while enabling intermediate position control function.
Structure: Integrated with potentiometer and intermediate position switch.



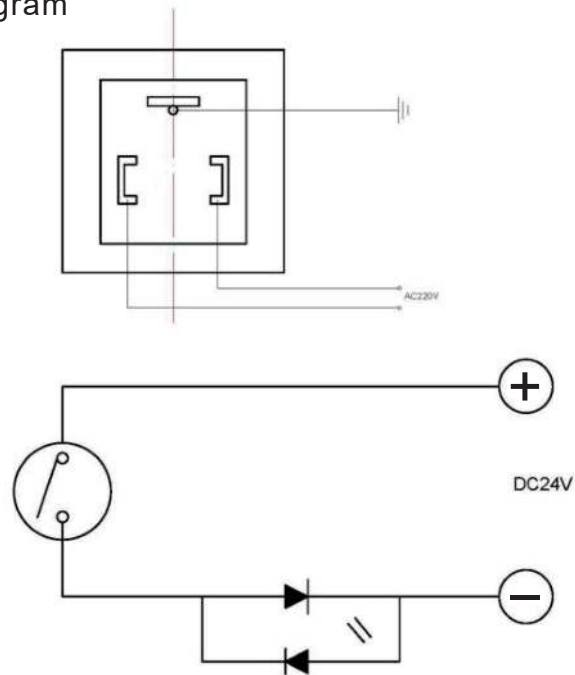
H

Three-phase AC switching signals are output through an external three-phase power phase-reversing circuit to control opening/closing operations, accompanied by a set of passive contact signals for fully open/fully closed position indication.

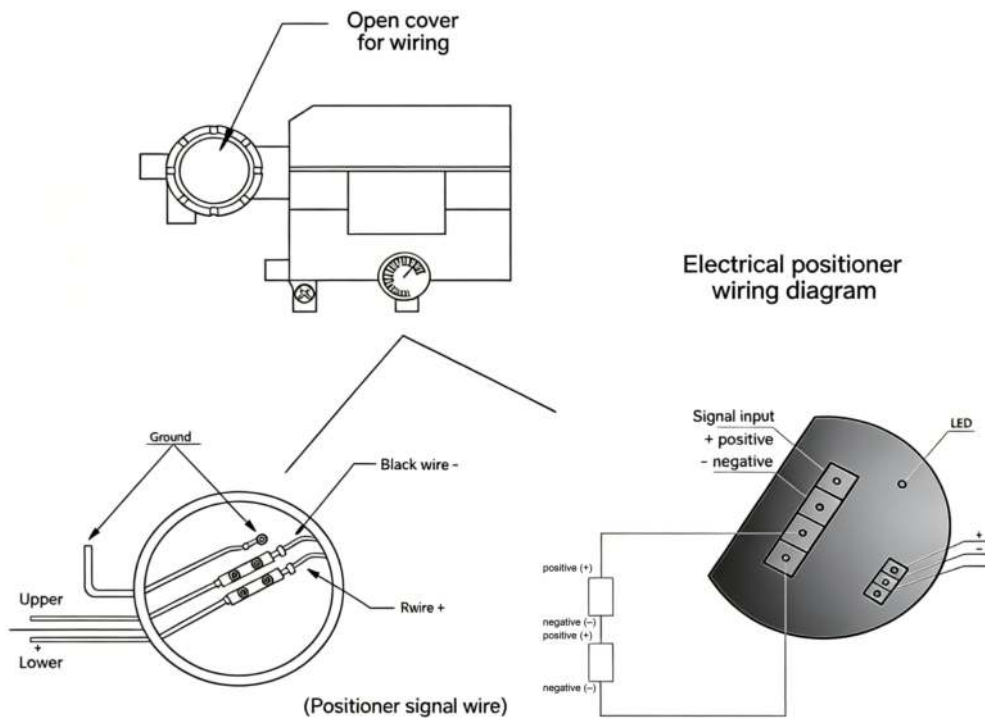


Pneumatic Valve Circuit Diagram

On-off Type Wiring Diagram



Regulating Type Wiring Diagram



Vision: Build more robust industrial automatic control systems

Mission: Make industrial automation technologies simpler and more reliable

Core Values: Simplify complexity, Continuous Innovation, Win-Win Collaboration



Wuhan Grat Control Valve Co., Ltd

TEL: +86-027-60706976

+86-027-60706977

Email: info@gratcv.com

Web: <https://www.gratcv.com>

Co.Addr: No. 62, Guanggu Avenue, Wuhan, Hubei, China.

Fty.Addr: B8-3-2, OVU, Wuhan, Hubei, China.



official website